

L 13 W/930

LUMILUX DE LUXE T5 Short | Tubular fluorescent lamps 16 mm, short, with G5 base



Areas of application

- Shops
- Supermarkets and department stores
- Public buildings
- Ideal where color rendering is an important factor

Product benefits

- Excellent color rendering
- Ideal for cost-effective creative illumination and decoration
- Very good luminous flux maintenance throughout the life of the lamp
- Slim and compact

Product features

- Average lifetime: up to 10,000 h (with QUICKTRONIC ECG)
- Very good color rendering group: 1A ($R_a \geq 90$)



Product datasheet

Technical data

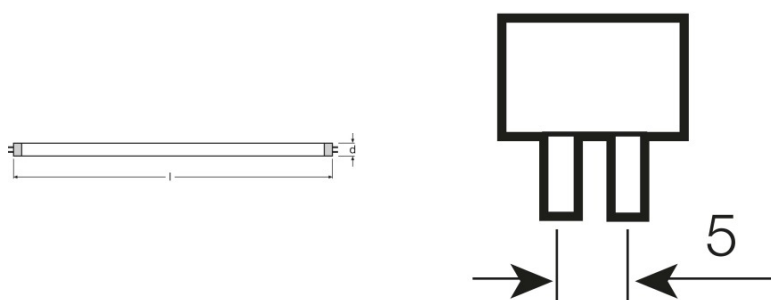
Electrical data

Nominal wattage	13.00 W
Rated lamp efficacy (HF data 25 °C)	Under clarification by authority and standardization body
Rated lamp efficacy (standard condition)	52 lm/W
Rated wattage	13.00 W
Rated luminous flux	680 lm

Photometrical data

Color rendering index Ra	≥90
Luminous flux at 25 °C	680 lm
Light color	930
Color temperature	3000 K
Nominal luminous flux	680 lm
Light color (designation)	LUMILUX DE LUXE Warm White
Rated LLMF at 2,000 h	0.80
Rated LLMF at 4,000 h	0.74
Rated LLMF at 6,000 h	0.71
Rated LLMF at 8,000 h	0.69

Dimensions & weight



Tube diameter	16 mm
Length	516.9 mm
Length with base excl. base pins/connection	517.00 mm
Diameter	16.0 mm
Maximum diameter	16.0 mm

Product datasheet

Temperatures & operating conditions

Rated ambient temp.w.max.luminous flux	35.0 °C
--	---------

Lifespan

Lifespan	8000 h ¹⁾
Rated lamp survival factor at 2,000 h	0.99
Rated lamp survival factor at 4,000 h	0.99
Rated lamp survival factor at 6,000 h	0.95
Rated lamp survival factor at 8,000 h	0.81
Operation mode LLMF/LSF	HF
Rated lamp life time	10000 h
Nominal lamp life time	10000 h

¹⁾ With preheat ECG

Additional product data

Base (standard designation)	G5
Lamp mercury content	2.5 mg
Appropriate disposal acc. to WEEE	Yes

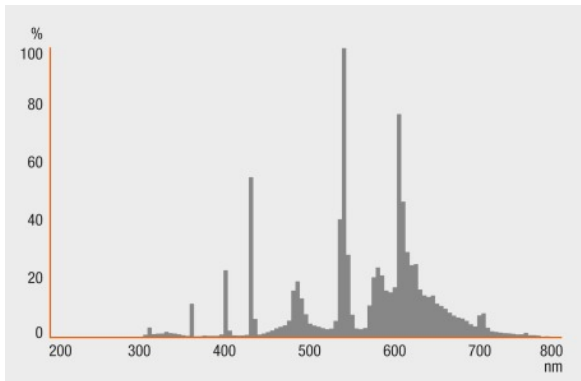
Capabilities

Dimmable	Yes
Suitable for indoor	Yes

Certificates & standards

Energy efficiency class	B
Energy consumption	15 kWh/1000h

Light Distribution



Spectral power distribution

System guarantee

OSRAM System+ Guarantee in combination with OSRAM ECGs

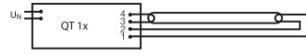
Safety advice

In case of lamp breakage: www.osram.com/brokenlamp

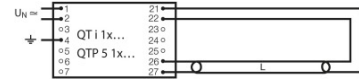
Product datasheet



Die Zuleitungen 3 und 4 sollen so kurz wie möglich sein



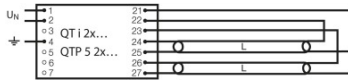
Die Zuleitungen 3 und 4 sollen so kurz wie möglich sein



Circuit diagram

Circuit diagram

Circuit diagram



Circuit diagram

Logistical Data

Product code	Product description	Packaging unit (Pieces/Unit)	Dimensions (length x width x height)	Volume	Gross weight
4050300015903	L 13 W/930	Shipping carton box 25	552 mm x 117 mm x 104 mm	6.72 dm ³	1587.00 g

The mentioned product code describes the smallest quantity unit which can be ordered. One shipping unit can contain one or more single products. When placing an order, for the quantity please enter single or multiples of a shipping unit.

References / Links

For more information on the system guarantee and the terms and conditions of the guarantee visit

▶ www.osram.com/system-guarantee

For more information on QUICKTRONIC electronic control gear go to

▶ www.osram.com/QUICKTRONIC

Product datasheet

Disclaimer

Subject to change without notice. Errors and omission excepted. Always make sure to use the most recent release.