



# CoreLine Waterproof

## WT120C LED60S/840 PSU L1500

Coreline Waterproof - LED Module, system flux 6000 lm - 840 neutral white - Power supply unit

Whether for a new building or renovation of an existing space, customers want lighting solutions that provide quality of light and substantial energy and maintenance savings. The new CoreLine Waterproof range of LED products can be used to replace traditional waterproof luminaires with fluorescent lamps. The process of selecting, installing and maintaining is so easy – it's a simple switch.

### Product data

General Information		Flammability mark	
Number of light sources	1 pc	CE mark	For mounting on normally flammable surfaces
Lamp family code	LED60S [ LED Module, system flux 6000 lm]	ENEC mark	ENEC mark
Beam angle of light source	120 °	UL mark	-
Light source color	840 neutral white	Warranty period	3 years + 2 years upon registration
Light source replaceable	No	Constant light output	No
Number of gear units	1 unit	Number of products on MCB of 16 A type B	24
Driver/power unit/transformer	Power supply unit	RoHS mark	RoHS mark
Driver included	Yes	Product family code	WT120C [ Coreline Waterproof]
Optic type	-	<b>Operating and Electrical</b>	
Optical cover/lens type	Polycarbonate bowl/cover	Input Voltage	220 to 240 V
Luminaire light beam spread	110°	Input Frequency	50 to 60 Hz
Emergency lighting	-	Inrush current	8 A
Control interface	-	Inrush time	0.060 ms
Connection	Push-in connector 3-pole	Power Factor (Min)	0.9
Cable	-		
Protection class IEC	Safety class I		
Glow-wire test	Temperature 850 °C, duration 30 s		

# CoreLine Waterproof

## Controls and Dimming

Dimmable	No
----------	----

## Mechanical and Housing

Housing Material	Polycarbonate
Reflector material	Steel
Optic material	-
Optical cover/lens material	Polycarbonate
Fixation material	Stainless steel
Optical cover/lens finish	Textured
Overall length	1530 mm
Overall width	87 mm
Overall height	96 mm

## Approval and Application

Ingress protection code	IP65 [ Dust penetration-protected, jet-proof]
Mech. impact protection code	IK08 [ 5 J vandal-protected]

## Initial Performance (IEC Compliant)

Initial luminous flux (system flux)	6000 lm
Luminous flux tolerance	+/-10%
Initial LED luminaire efficacy	125 lm/W
Init. Corr. Color Temperature	4000 K
Init. Color Rendering Index	≥80
Initial chromaticity	(0.38, 0.38) SDCM <3.5
Initial input power	48 W
Power consumption tolerance	+/-10%

## Over Time Performance (IEC Compliant)

Driver failure rate at 5000 h	1 %
Median useful life L70B50	50000 h
Median useful life L80B50	30000 h
Median useful life L90B50	15000 h

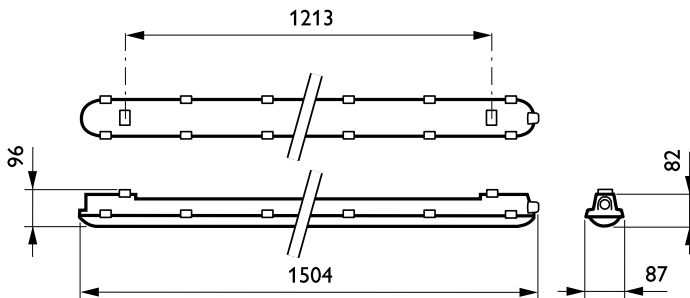
## Application Conditions

Ambient temperature range	-20 to +35 °C
Performance ambient temperature Tq	25 °C
Average ambient temperature	25 °C
Maximum dim level	Not applicable
Suitable for random switching	Yes (relates to presence/ movement detection and daylight harvesting)

## Product Data

Full product code	871829184049700
Order product name	WT120C LED60S/840 PSU L1500
EAN/UPC - Product	8718291840497
Order code	910500453339
Numerator - Quantity Per Pack	1
Numerator - Packs per outer box	1
Material Nr. (12NC)	910500453339
Net Weight (Piece)	1.820 kg

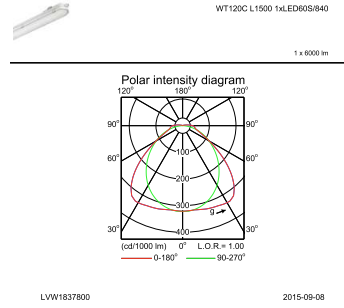
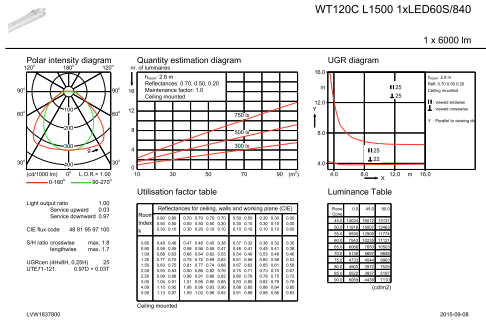
## Dimensional drawing



CoreLine Waterproof WT120C

# CoreLine Waterproof

## Photometric data



IFGU1\_WT120C L1500 1xLED60S840.EPS

IFPC1\_WT120C L1500 1xLED60S840.EPS

