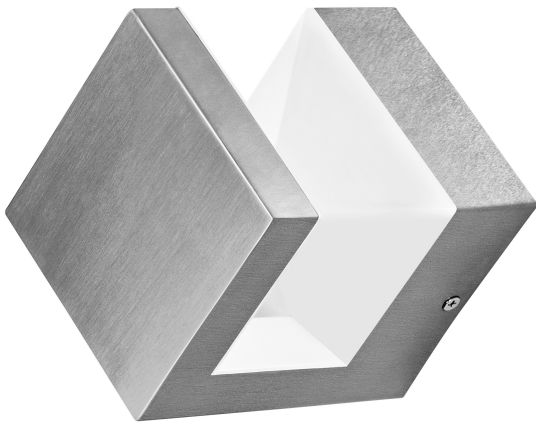


PRODUCT DATASHEET

ENDURA STYLE PYRAMID Wall 9W

ENDURA STYLE PYRAMID | Stainless steel wall luminaires and bollards with indirect illumination



TECHNICAL DATA

Electrical data

Nominal wattage	9.00 W
Operating mode	Mains voltage
Nominal voltage	220...240 V
Power factor λ	> 0,5

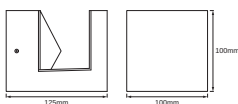
Photometrical data

Color temperature	3000 K
Luminous flux	600 lm
Luminous efficacy	67 lm/W
Light color	Warm White
Standard deviation of color matching	< 6 sdc _m
Color rendering index Ra	≥80

Light technical data

Beam angle	90 °
------------	------

Dimensions & weight



Length	125.00 mm
Height	100.00 mm
Width	100.00 mm
Product weight	650.00 g

Colors & materials

Body material	Stainless steel
Product color	Steel
Housing color	Steel
Cover material	Polycarbonate (PC)

Temperatures & operating conditions

Ambient temperature range	-20...+40 °C
---------------------------	--------------

Lifespan

Number of switching cycles	12500
Lifespan L70/B50 at 25 °C	25000 h

Additional product data

Mounting type	Surface
Mounting location	Wall



Capabilities

Dimmable	No
Type of connection	Terminal, 3-Pole (L, N, PE)
LEDmod replaceable	Not replaceable

Certificates & standards

Protection class	I
Type of protection	IP44
Standards	CE / EAC / REACH / RoHS

DOWNLOAD DATA

DOWNLOAD DATA	
	User instruction ENDURA STYLE PYRAMID
	Tender documents Tender Text 4058075477896

LOGISTICAL DATA

Product code	Packaging unit (Pieces/Unit)	Dimensions (length x width x height)	Gross weight	Volume
4058075477896	Folding box 1	107 mm x 107 mm x 139 mm	695.00 g	1.59 dm ³
4058075477902	Shipping box 4	228 mm x 228 mm x 164 mm	3043.00 g	8.53 dm ³

The mentioned product code describes the smallest quantity unit which can be ordered. One shipping unit can contain one or more single products. When placing an order, for the quantity please enter single or multiples of a shipping unit.

DISCLAIMER

Subject to change without notice. Errors and omission excepted. Always make sure to use the most recent release.

