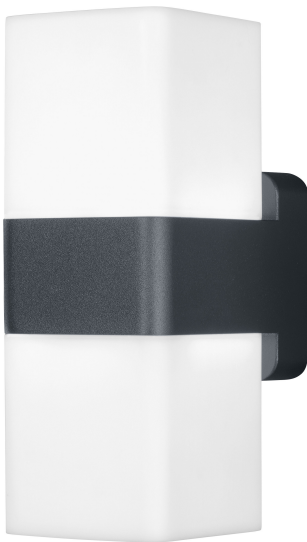


# PRODUCT DATASHEET

## SMART+ WIFI CUBE Updown

SMART+ CUBE MULTICOLOR | Luminaires with WiFi technology



---

### Areas of application

- General illumination
- Gardens
- Patios, balconies

---

### Product benefits

- Easy and quick installation
- Colorful garden lighting with smart and intelligent control options
- Combines the functionality of general lighting and mood lighting

---

### Product features

- Controllable via LEDVANCE SMART+ WiFi App (with minimum Android 4.4 or iOS 9.0)
- Controllable via voice control available: Google Assistant or Amazon Alexa
- RGB color control, approx. 16 million color options adjustable
- Dimmable
- Color temperature: 3,000 K (Warm White)
- Network protocol: WiFi
- Type of protection: IP44



## TECHNICAL DATA

### Electrical data

Nominal wattage	13.50 W
Nominal voltage	220...240 V
Nominal current	63.8 mA
Mains frequency	50...60 Hz
Power factor $\lambda$	> 0,5
Operating mode	Mains voltage

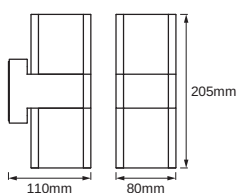
### Photometrical data

Light color	RGBW
Standard deviation of color matching	< 6 sdc <sub>m</sub>
Nominal luminous flux	900 lm
Luminous flux	900 lm
Luminous efficacy	67 lm/W
Color temperature	3000 K
Color rendering index Ra	≥80

### Light technical data

Beam angle	315.00 °
Starting time	< 0.5 s

### Dimensions & weight



Product weight	630.00 g
Length	110.00 mm
Width	80.00 mm
Height	205.00 mm

### Lifespan

Number of switching cycles	12500
----------------------------	-------

### Colors & materials

Product color	Dark gray
Housing color	Dark gray
Body material	Aluminum
Cover material	Polycarbonate (PC)

### Temperatures & operating conditions

Ambient temperature range	-20...+40 °C
---------------------------	--------------

### Additional product data

Product remark	Reset settings to default by switching the product on for three seconds and off for three seconds and repeating this five times.
Mounting location	Wall

### Capabilities

Dimmable	Yes
Type of connection	Terminal, 3-Pole (L, N, PE)
Compatible smart home technology	Google Assistant / Amazon Alexa
LEDmod replaceable	Not replaceable


### Certificates & standards

Energy efficiency class	A++
Standards	CE / EAC / REACH / RoHS
Protection class	I
Type of protection	IP44

### EQUIPMENT / ACCESSORIES

- Mounting screws and dowels included
- Control via app or voice control requires compatible Smart home system
- For control via LEDVANCE SMART + WiFi App, a smart phone or Tablet PC is required

### DOWNLOAD DATA

DOWNLOAD DATA	
	User instruction SMART OUTD WIFI CUBE

## DOWNLOAD DATA



Declarations of conformity  
CE\_SMART OUTD WIFI CUBEUPDOWN RGBW DG

## LOGISTICAL DATA

Product code	Packaging unit (Pieces/Unit)	Dimensions (length x width x height)	Gross weight	Volume
4058075478077	Folding box 1	87 mm x 212 mm x 124 mm	682.00 g	2.29 dm <sup>3</sup>
4058075478084	Shipping box 4	360 mm x 230 mm x 140 mm	3015.00 g	11.59 dm <sup>3</sup>

The mentioned product code describes the smallest quantity unit which can be ordered. One shipping unit can contain one or more single products. When placing an order, for the quantity please enter single or multiples of a shipping unit.

## DISCLAIMER

Subject to change without notice. Errors and omission excepted. Always make sure to use the most recent release.