



MASTER Value LEDtube Universal T8



MAS LEDtube VLE UN 1200mm UO 15.5W865 T8

The new Philips MASTER Value LEDtube Universal T8 brings ease and simplicity to your lighting project. That's because you do not need to match the driver technology any more: a unique design enables the Philips MASTER Value LEDtube Universal T8 to directly fit in luminaires operating on either electromagnetic ballasts or HF electronic ballasts or mains power connection. It is so simple to operate and you no longer need to stock two types of tubes! Perfectly safe, reliable and easy to install Philips MASTER Value LEDtube Universal T8 is the ideal alternative to standard fluorescent tubes to maximise value over lifetime with high energy saving and lower maintenance costs.

Product data

General Information	
Cap base	G13 [Medium Bi-Pin Fluorescent]
EU RoHS compliant	Yes
Nominal lifetime (nom.)	60000 h
Switching cycle	50,000X
	Sphere

Light Technical	
Colour Code	865 [CCT of 6,500 K]
Beam Angle (Nom)	190 °
Luminous flux (nom.)	2500 lm
Colour designation	Cool Daylight
Correlated Colour Temperature (Nom)	6500 K
Luminous efficacy (rated) (nom.)	161.00 lm/W
Colour consistency	<6
Colour rendering index (nom.)	80

LLMF at end of nominal lifetime (nom.) 70 %	
---	--

Operating and Electrical	
Input frequency	50 to 60 Hz
Power (Rated) (Nom)	15.5 W
Lamp current (nom.)	75 mA
Starting time (nom.)	0.5 s
Warm-up time to 60% light (nom.)	0.5 s
Power factor (nom.)	0.9
Voltage (Nom)	220-240 V

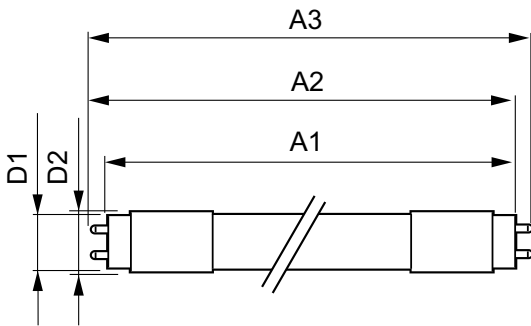
Temperature	
T-ambient (max.)	45 °C
T-ambient (min.)	-20 °C
T storage (max.)	65 °C
T storage (min.)	-40 °C

MASTER Value LEDtube Universal T8

T-Case maximum (nom.)	55 °C
Controls and Dimming	
Dimmable	No
Mechanical and Housing	
Lamp Finish	Frosted
Bulb material	Glass
Product length	1200 mm
Bulb shape	Tube, double-ended
Approval and Application	
Energy Efficiency Class	C
Energy-saving product	Yes
Approval marks	RoHS compliance CE marking KEMA Keur certificate

Energy consumption kWh/1,000 hours	16 kWh
	403660
Product Data	
Full product code	871951431672000
Order product name	MAS LEDtube VLE UN 1200mm UO 15.5W865 T8
EAN/UPC – product	8719514316720
Order code	31672000
SAP numerator – quantity per pack	1
Numerator – packs per outer box	10
SAP material	929002997202
SAP net weight (piece)	0.215 kg

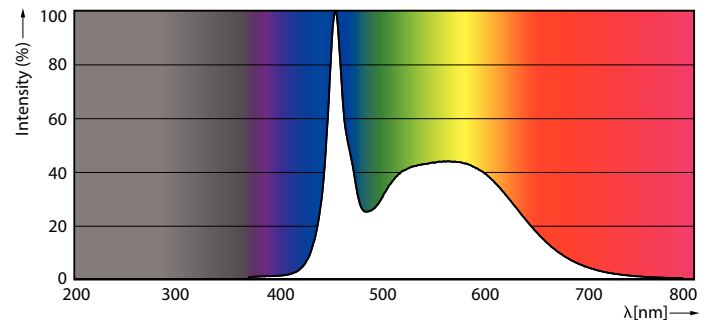
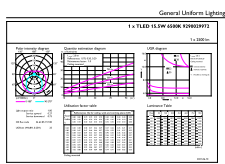
Dimensional drawing



MasValUni 4ft 15.5W 2500lm 6500K

Product	D1	D2	A1	A2	A3
MAS LEDtube VLE UN 1200mm UO 15.5W865 T8	26 mm	28 mm	1199 mm	1205 mm	1213 mm

Photometric data

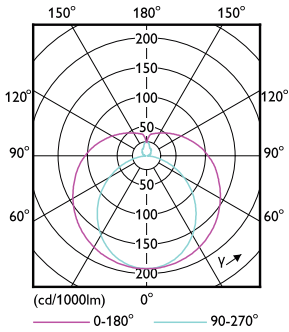


LEDtube MAS 1 15,5W G13 2500lm 865-GUL

LEDtube MAS 1 15,5W G13 2500lm 865-POC

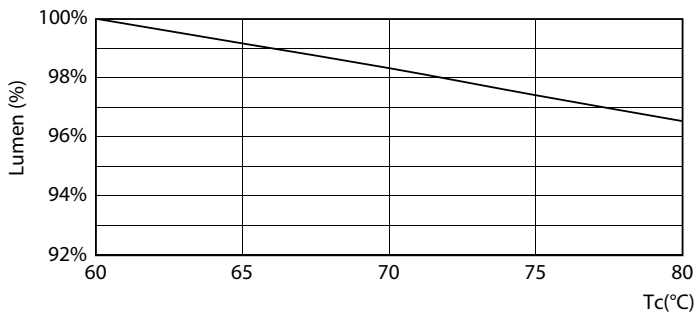
MASTER Value LEDtube Universal T8

Photometric data

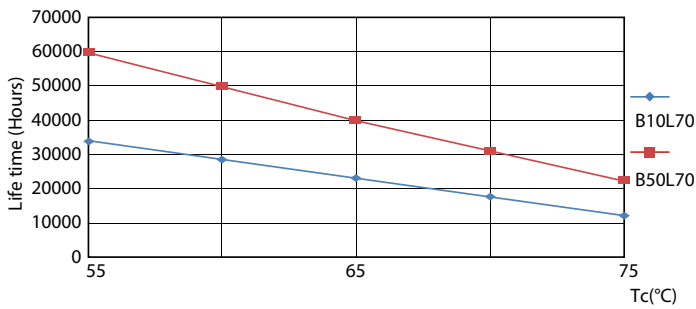


LEDtube MAS 1 15,5W G13 2300lm-LDD

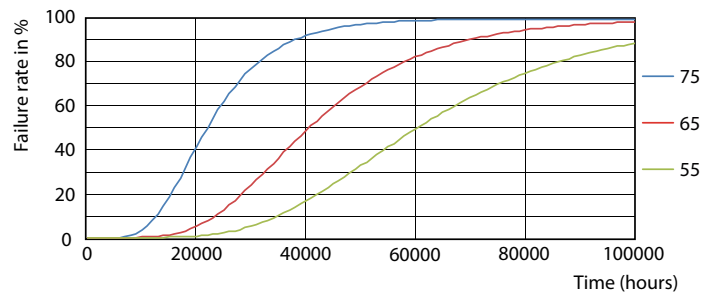
Lifetime



LEDtube MAS 1 15,5W 60K LumenVsTc-LMP



LEDtube MAS 1 15,5W 60K LifetimeVsTc-LED



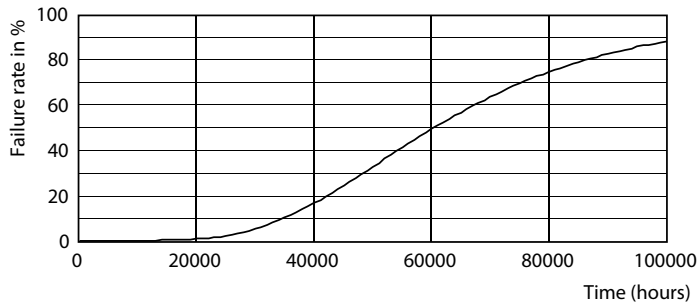
LEDtube MAS 1 15,5W 60K FailureRate-LED



LEDtube_60K

MASTER Value LEDtube Universal T8

Lifetime



LEDtube_60K

