



MASTER Value LEDtube Universal T8



MAS LEDtube VLE UN 1500mm UO 23W865 T8

The new Philips MASTER Value LEDtube Universal T8 brings ease and simplicity to your lighting project. That's because you do not need to match the driver technology any more: a unique design enables the Philips MASTER Value LEDtube Universal T8 to directly fit in luminaires operating on either electromagnetic ballasts or HF electronic ballasts or mains power connection. It is so simple to operate and you no longer need to stock two types of tubes! Perfectly safe, reliable and easy to install Philips MASTER Value LEDtube Universal T8 is the ideal alternative to standard fluorescent tubes to maximise value over lifetime with high energy saving and lower maintenance costs.

Product data

General Information		LLMF at end of nominal lifetime (nom.) 70 %	
Cap base	G13 [Medium Bi-Pin Fluorescent]	Operating and Electrical	
EU RoHS compliant	Yes	Input frequency	50 to 60 Hz
Nominal lifetime (nom.)	60000 h	Power (Rated) (Nom)	23 W
Switching cycle	50,000X	Lamp current (nom.)	106 mA
	Sphere	Starting time (nom.)	0.5 s
		Warm-up time to 60% light (nom.)	0.5 s
		Power factor (nom.)	0.9
		Voltage (Nom)	220-240 V
Light Technical		Temperature	
Colour Code	865 [CCT of 6,500 K]	T-ambient (max.)	45 °C
Beam Angle (Nom)	190 °	T-ambient (min.)	-20 °C
Luminous flux (nom.)	3700 lm	T storage (max.)	65 °C
Colour designation	Cool Daylight	T storage (min.)	-40 °C
Correlated Colour Temperature (Nom)	6500 K		
Luminous efficacy (rated) (nom.)	160.00 lm/W		
Colour consistency	<6		
Colour rendering index (nom.)	80		

MASTER Value LEDtube Universal T8

T-Case maximum (nom.)	60 °C
-----------------------	-------

Controls and Dimming

Dimmable	No
----------	----

Mechanical and Housing

Lamp Finish	Frosted
Bulb material	Glass
Product length	1500 mm
Bulb shape	Tube, double-ended

Approval and Application

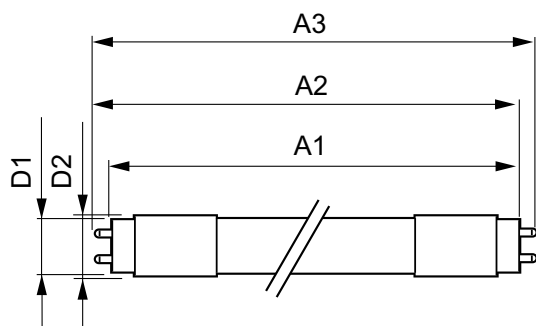
Energy Efficiency Class	C
Energy-saving product	Yes
Approval marks	TUV
Approval marks	RoHS compliance CE marking KEMA Keur certificate

Energy consumption kWh/1,000 hours	23 kWh
	403663

Product Data

Full product code	871951431678200
Order product name	MAS LEDtube VLE UN 1500mm UO 23W865 T8
EAN/UPC – product	8719514316782
Order code	31678200
SAP numerator – quantity per pack	1
Numerator – packs per outer box	10
SAP material	929002997502
SAP net weight (piece)	0.290 kg

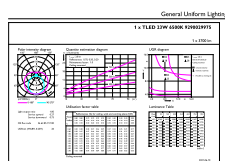
Dimensional drawing



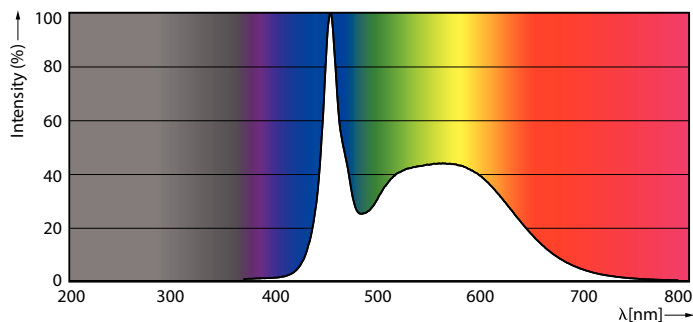
MAS LEDtube VLE UN 1500mm UO 23W865 T8

Product	D1	D2	A1	A2	A3
MAS LEDtube VLE UN 1500mm UO 23W865 T8	26 mm	28 mm	1500 mm	1506 mm	1514 mm

Photometric data



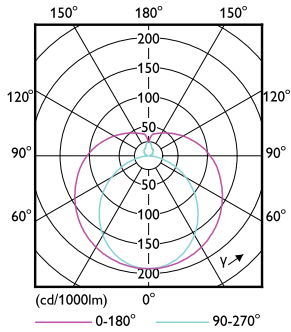
LEDtube MAS 1 23W G13 3700lm 865-GUL



LEDtube MAS 1 15,5W G13 2500lm 865-POC

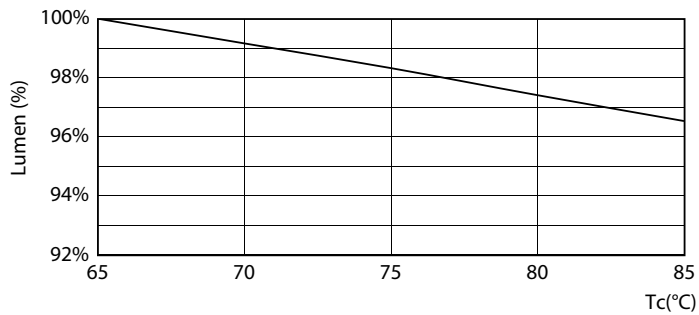
MASTER Value LEDtube Universal T8

Photometric data

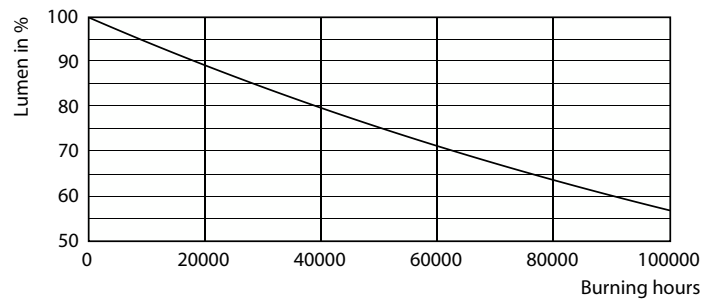


LEDtube MAS 1 15,5W G13 2300lm-LDD

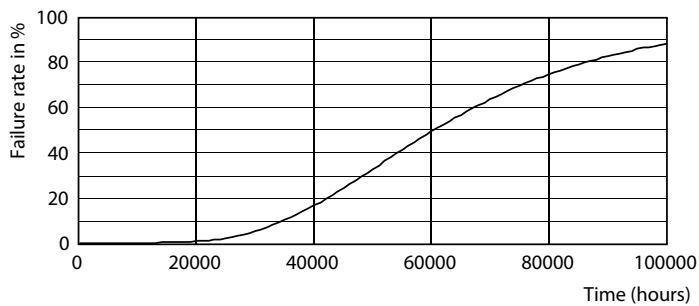
Lifetime



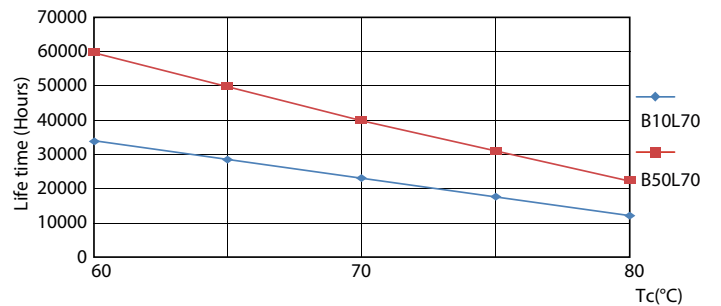
LEDtube MAS 1 23W 60K LumenVsTc-LMP



Lumen Maintenance Diagram



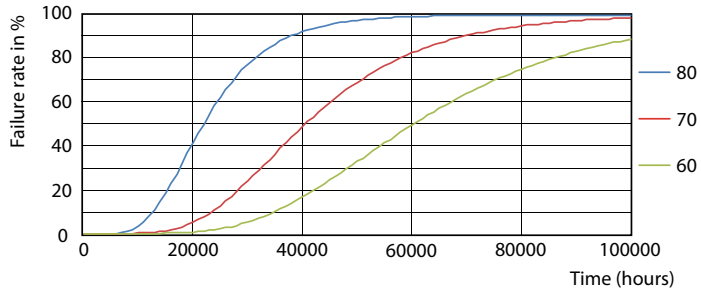
Life Expectancy Diagram



LEDtube MAS 1 23W 60K LifetimeVsTc-LED

MASTER Value LEDtube Universal T8

Lifetime



LEDtube MAS 1 23W 60K FailureRate-LED

